



# LEUPOLD

## Leupold® Carbine Optic (LCO™)

### Mounting & Operation Instructions

## Operating Instructions

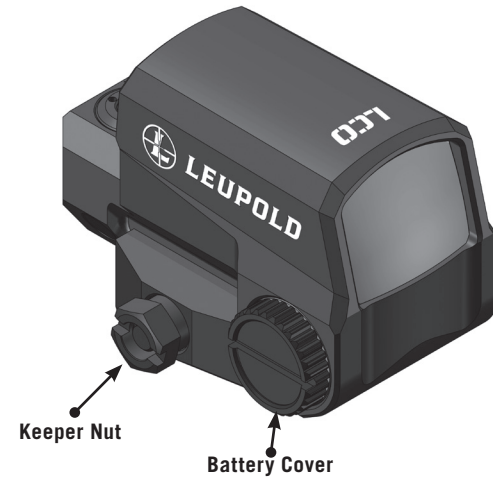
For optimum performance and to prevent damage to this precision instrument, carefully follow all instructions.

### Features

- DiamondCoat™, scratch resistant magnifying lens for maximum field-of-view, brightness, and resolution
- Extremely durable aluminum housing
- 16 illumination settings
- Unlimited eye relief
- 1/2 MOA click elevation/windage adjustments
- Wide field-of-view
- Blackened lens edges

### Specifications

- Magnification: 1.0x
- Sight window: 1.26mm x .98mm
- Elevation adjustment range: 60 MOA
- Windage adjustment range: 60 MOA
- 20 MOA per revolution of adjustment
- Subtension of the aiming point: 1.0 MOA Dot
- Waterproof to 66ft.
- Operating Temperature Range: -20°F to +120°F (-29°C to +49°C)
- Storage Temperature Range: -40°F to +160°F (-40°C to +71°C)
- Power Supply: One (1) 3V CR123A Lithium battery
- Dimensions: (LxWxH) 3.60" x 2.25" x 2.41" (91.4mm x 57.1mm x 61.2mm)
- Weight (with battery installed): 8.9oz. (252.3g)



### Package Contents

- LCO Red Dot Sight, 1.0 MOA Dot
- (1) 3V Lithium battery (CR 123A)
- Operating Instructions



### Cautions & Warnings:

Check to ensure that the magazine of the firearm has been removed or emptied, that the action is open, and that there is not a round in the chamber. Only after double checking the firearm, verifying it is empty and safe, should you proceed with the installation of the Leupold Carbine Optic. Do not look directly into the sun, light arcs or other high-intensity light sources. Keep away from children.

### Battery Installation

The unit operates with one commercially available 3V Lithium battery (CR 123A) only. Using your fingers, remove the battery cover by turning it counterclockwise. Insert the battery so the negative side (-) is facing up and reinstall the battery cover. Extended periods of complete water immersion may result in accelerated battery depletion, possibly requiring battery replacement.

### Illumination Operation

LCO is equipped with sixteen illumination intensities. To activate the LCO press and release the power button located in the center of the illumination dial. Cycling through the illumination intensities is done by rotating the illumination dial in either direction. When the highest setting is reached, the illumination will flash 2 times. At the lowest setting the illumination will appear to be off. To power the LCO off, press and hold the power button for approximately 3 seconds, or until the illumination turns off. When reactivated, the unit will return to the last known setting.

### Low Battery Indicator

The LCO has a unique feature that flashes the aiming point when low battery power is detected. The operator will have several hours of operating time in this mode before the sight is rendered inoperable without a battery change.

### Power-Saving Mode

When the optic is completely stationary for 15 minutes the circuitry switches into sleep mode. It immediately powers up when any movement or vibration is detected. The motion sensor will NOT reactivate the LCO if it has been turned off manually.

### Installation

Position the LCO in the desired location on the rail with the keeper nut on the right side of the firearm. Torque the keeper nut to 65 in-lbs.

## Operating Procedure

### Elevation and Windage Adjustment

Separate controls for the elevation and windage adjustments are found on the top and left side of the sight. Turn the "U" (UP) or "L" (LEFT) screws with a screwdriver or coin.

### Zeroing the Point-of-Impact

The LCO windage and elevation screws move the point of impact 20 MOA (5" @ 25 yds) per revolution.

### Boresighting the Leupold Carbine Optic

To make the boresighting process easier, Leupold recommends placing the eye near the LCO while making windage/elevation adjustments. As with any boresighting procedure, be sure to follow all safety precautions prior to boresighting, and make sure the boresighter has been removed from the barrel prior to loading the magazine or chamber.

## Leupold Lifetime Guarantee

Anyone can offer you a lifetime warranty, but guaranteeing performance takes serious dedication and craftsmanship. From our Beaverton, Oregon factory, to the wilderness, the battlefield, and everywhere in-between we won't let you down.

If your Leupold scope, sight, binocular or spotting scope doesn't perform, we will repair or replace it for free, whether you're the original owner or not – forever.

For complete details visit [leupold.com/warranty](http://leupold.com/warranty)

## Leupold Product & Technical Service

If your Leupold product fails to perform in any way, please contact a Leupold Product Specialist within our Product Service department to determine if the problem can be solved without sending the product to Leupold. Many times, the problem can be solved without sending the product to us.

Leupold Technical Service will assist you with the problem in the best and most efficient manner.

Please register your product at [leupold.com/register](http://leupold.com/register).

## To Reach Leupold Product Service

### Phone:

5:00 a.m. - 8:00 p.m. PST  
M-F 1-800-LEUPOLD  
or (503) 526-1400

### Fax:

24 hours a day, 7 days a week  
(503) 352-7621

### E-mail:

[productspecialist@leupold.com](mailto:productspecialist@leupold.com)

### Parcel Service

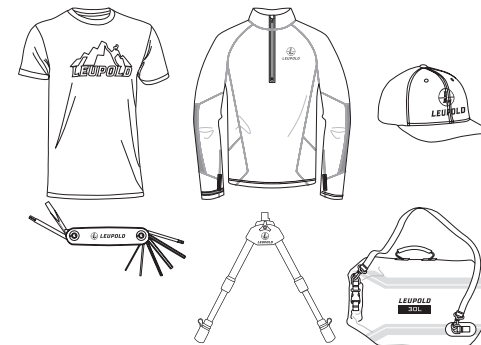
Leupold Product Service  
14400 NW Greenbrier Parkway  
Beaverton, OR 97006-5791  
USA

### Postal Service

Leupold Product Service  
P.O. Box 688  
Beaverton, OR 97075-0688  
USA

## Leupold Pro Gear

From outerwear to shooting accessories, Pro Gear is tested in the field and built to perform. You can see the full lineup at [Leupold.com](http://Leupold.com).



LEUPOLD, GOLD RING, MARK 4, the Golden Ring design, the circle-L reticle logo design, and various other marks are registered trademarks of Leupold & Stevens, Inc. All marks, including corporate logos and emblems, are subject to Leupold's rights and may not be used in connection with any product or service that is not Leupold's, or in any manner that disparages or discredits Leupold, or in a manner likely to cause confusion.

Certain other trademarks used in connection with Leupold products and services are the property of their respective owners, and are used with permission. THE BOONE & CROCKETT CLUB® and BOONE & CROCKETT® are registered trademarks of the Boone & Crockett Club. RMEF® and ROCKY MOUNTAIN ELK FOUNDATION® are registered trademarks of the Rocky Mountain Elk Foundation. Mossy Oak® Break-Up®, Mossy Oak® Break-Up® Country®, Mossy Oak® Break-Up® Infinity™, Mossy Oak® Mountain, Mossy Oak® Obsession®, and Mossy Oak® Treestand®, are trademarks or registered trademarks of HAAS Outdoors, Inc. A.R.M.S. ® is a registered trademark of Atlantic Research Marketing Systems, Inc. The ARD (anti-reflection device) is manufactured by Tenebraex a Division of Armament Technology Incorporated 110 Chain Lake Drive Unit 3E, Halifax NS Canada B3S 1A9

Cordura® is a registered trademark of INVISTA North America S.A.R.L. Freedom Arms® is a registered trademark of Freedom Arms, Inc. Horus® and Horus Vision® are registered trademarks of Horus Vision, LLC. Kryptek®, Kryptek® Highlander®, and Kryptek® Typhon™ are trademarks or registered trademarks of Kryptek Outdoor Group, LLC. Magnum Research® is a registered trademark of Magnum Research, Inc. Ruger® is a registered trademark of Sturm, Ruger & Company, Inc. Torx® is a registered trademark of Acument Intellectual Properties, LLC. ZEMAX® is a registered trademark of Zemax, LLC. Zygo® is a registered trademark of Zygo Corporation.

For patent information, visit [leupold.com/patents](http://leupold.com/patents)

We reserve the right to make design and/or material modifications without prior notice.

Copyright © 2018 Leupold & Stevens, Inc. All rights reserved.



## Leupold & Stevens, Inc.

PO Box 688 Beaverton, Oregon 97075-0688

[leupold.com](http://leupold.com)

1-800-LEUPOLD (538-7653)

Part #120215 Artwork #120216E

